

# 2-DAY CONTRACTORS REGIONAL EQUIPMENT, TRUCK & TRAILER

301-739-0538

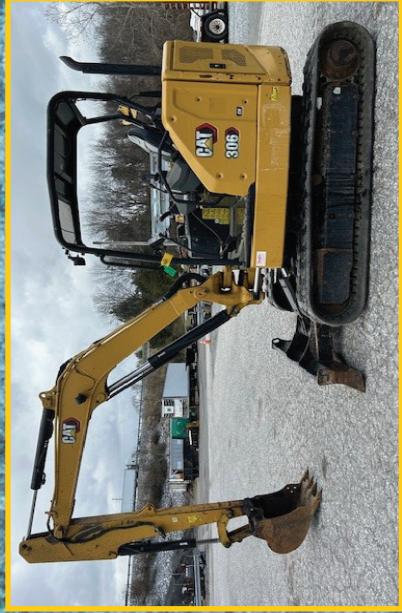
# AUCTION

Live **THURSDAY**

Live **FRIDAY**  
& ONLINE

**THURSDAY • APRIL 9, 2026 • 8AM**

**FRIDAY • APRIL 10, 2026 • 8AM**



LOCATED AT

**7704 Mapleville Road  
Boonsboro, MD 21713**

Just East of Interstate 81,  
At Exit 35 Off Interstate 70

# J.G. Cochran

AUCTIONEERS & ASSOCIATES LTD.

COCHRANAUCTIONS.COM

7704 MAPLEVILLE ROAD, P.O. BOX 222 • BOONSBORO, MD 21713  
301-739-0538 • FAX 240-739-7663 • TOLL FREE (MD) 1-800-310-2844



Find us on:

NATIONALLY RECOGNIZED, AWARD WINNING AUCTIONEERS SINCE 1972

# 2-DAY AUCTION

THURSDAY • APRIL 9, 2026 • 8AM

FRIDAY • APRIL 10, 2026 • 8AM

J.G.  
**Cochran**

## Auction Complex

AUCTIONEERS & ASSOCIATES LTD.

### SELLING EQUIPMENT, TRUCKS AND TRAILERS FOR:

- \* Selling for The Estate of Richard Blair Paylor from Hancock, MD - Selling tools, ATV, Corvette & Related Items - Check out the Real Estate April 16th
- \* Selling for The Estate of James Edward Palmer Jr from Boonsboro, MD - selling tankers, heavy trucks, Livestock & Tanker trailers
- \* Selling for an Estate from Kearneysville, WV- shop equipment and tools and farm equipment
- \* Selling for Several Local Estates
- \* Selling for the United States Bankruptcy Courts for the District of Maryland
- \* Selling for Harford County School Board
- \* Washington County Government
- \* City of Hagerstown, Maryland & Other Municipalities
- \* Washington County Sheriff's Department
- \* Other Regional Contractors, Dealers, Banking Institutions and Public are participating!



Live

**THURSDAY • APRIL 9, 2026 • 8 AM**

THURSDAY, April 9, 2026

**AUCTION BEGINS AT 8:00 AM - VERY BRIEF LISTING!**

**ITEMS COMING IN DAILY,**

**AUCTION WILL DOUBLE BY SALE DAY!!**

**SHOP EQUIPMENT, TOOLS & MISCELLANEOUS:** Air Compressors, Tool Boxes, Selection of Power Tools of all kind, Mechanic Tools, Sockets & Wrenches of all kind, Hardware of all kind, Clamps, Battery Operated Tools, Floor Jacks, Bench Grinders, Chop Saws, Tap & Die Sets, Shop Carts, Torch Outfits, Oil Drain, Floor Jacks, Jack Stands, Mig Welders, Grinders, Tire Changer, Fiberglass & Aluminum Ladders. Hundreds of Items not listed- Most all in Good Condition! Virtually Impossible To List!

**LAWN & GARDEN EQUIPMENT** (Some New & Like New) including: Zero Turn Mowers, Conventional Mowers, Power Mowers, Chain Saws, Weed Wackers, Leaf Blowers & Other Related Items.

**TRACTOR TRAILER LOAD OF NEW/UNUSED METAL ROOFING AND SIDING- NOT Seconds-** Just Over Runs- Various Color & Size

**(3)TRACTOR TRAILER LOADS OF WALL PANELS, ROOF TRUSS & OTHER BUILDING MATERIAL**

**(2)TRACTOR TRAILER LOAD OF NEW/UNUSED PATIO BLOCKS & PADS**

**BEAUTIFUL SELECTION OF PLANTS, TREES, ETC:** Big selection of Fruit Trees, Shade and Flowering Trees, Perennials, Arborvitae and Leyland Cypress for Privacy Hedges, Flowering and Ornamental Shrubs - and MUCH MORE! All from our good friend- Guy Mueller from Lancaster County- All High Quality!

**\*\* NOTE: MAY BE SELLING WITH UP TO (3) AUCTIONEERS AT ONE TIME!! PLEASE COME PREPARED!! - ITEMS COMING IN DAILY!! \*\***

**IF YOU WOULD LIKE TO PARTICIPATE IN THIS AUCTION,**

**CALL 301.739.0538**

**CHECK OUT OUR WEBSITE AT**

**CochranAuctions.com**



**Live & ONLINE**

**FRIDAY • APRIL 10, 2026 • 8 AM**

**LOADER BACKHOES:** Case, Caterpillar, JCB, Terex, Kubota and Others.

**TELESCOPIC & STRAIGHT MAST FORKLIFTS, MANLIFTS & WORKING PLATFORMS:** Caterpillar, JLG, Yale, Clark, Genie, Hyster, Toyota and Others.

**SKID LOADERS:** Bobcat, Gehl, Kubota, Caterpillar, New Holland, Case, Deere and Other Brands.

**SKID LOADER ATTACHMENTS** - Most NEW/UNUSED: Heavy & Light Face Plates; 72" LoPro Buckets; 66" LoPro Buckets; 72" Heavy Duty Rock Buckets; 72" Root Bucket w/Top Clamp; 66" Buckets w/Top Clamp; 72" Rock Bucket; 72" Rock Bucket w/Grapple; 66" Root Bucket w/Top Clamp; 78" Snow/Mulch Bucket; Fork Frame w/42" Forks; 48" Forks w/Frames; 84" Snow Bucket; Fork Frames; Stump Buckets; New/Unused Dozer Blade; Universal Sweepers and Others Related Items.

**FARM, INDUSTRIAL & COMPACT TRACTORS** including: Kubota, New Holland, John Deere, Case/International & Others.

**FARM EQUIPMENT** including Many 3 Pt. Hitch from Estates, Various Hay Equipment

**LARGE SUPPORT EQUIPMENT:** Portable Light Towers; Trench Rollers; Air Compressors; Fuel Tanks w/Pumps; Caged 275 Gal. Tanks; Diesel Generators; Diesel Water Pumps; Truck Bodies; Utility Bodies; Excavator

& Backhoe Buckets of All Sizes; Selection of New & Used Equipment Tires; Tamper Heads & Breakers for Excavator; Thumbs for Excavator; Flail and Finishing Mowers; New/Used 3 Pt. Tillers; Auger Bits; 3 Pt. Scraper Blades; Straw Blowers & Other Related Items- Virtually Impossible to List, Items Coming in Daily!!

**(6)TRACTOR TRAILER LOADS OF NEW/UNUSED MANUFACTURED EQUIPMENT:** Golf Carts; Generator; Water Pump; Breaker; New/ Unused Grapple Bucket; Skeleton Grapple; Root Rake; Univ. Rollers; Snow Pushers; Univ. Blades; Univ. Tillers; Univ. Trenchers; Univ. Buckets of Various Size; Fork Extensions; Wood Chipper; Hoppers; Small Sea Containers made into Offices; Sets of Beautiful Iron Driveway Gates; Tool Boxes- Mostly Stainless Steel; Pallet Shelving- Some Like New; Chains & Slings; Anvils & Other Items Not Mentioned.

**LAWN & GARDEN EQUIPMENT** (Some New & Like New) including: Zero Turn Mowers & Conventional Mowers

**VARIOUS MOON BOUNCES**

**READY TO USE CONSETION TRAILER** With Stainless Prep Tables, Stainless Table Saw, Grill Top, Stationary Sink, Prep Sink, Prep Bar with Compartments, Set Up For Solar, Generator & Has A Tankless Hot Water Heater

**EQUIPMENT, TRACTORS & VEHICLES IN NEED OF REPAIR**

**DUMP TRUCKS:** Tri-, Tandem & Single Axle: Mack, Freightliner, Peterbilt, Kenworth, Ford, International- Some with Snow Blades and Others.

**ROAD TRACTORS:** Tandem & Single Axle: Mack, Freightliner, Kenworth, Peterbilt, and Others- Some with Wetlines.

**SUPPORT TRUCKS:** Service/Mechanics w/Cranes, Roll-back, Cab & Chassis, Bucket, Utilities, Reefer, Dry Van w/ Lift Gates, Cut Away, Fuel & Lube, Stake Bodies, Flatbeds, Cargo and Passenger Vans and Other Models.

**PICKUPS, VANS & AUTOMOBILES:** Some Classic, From Estates, Bankruptcy & Other Owners.

**GOLF CARTS, 4 WHEELERS, ATV'S:** Kubota, John Deere, Honda, Polaris, Kawasaki, Suzuki and Others.

**TRAILERS & SEA CONTAINERS:** Enclosed; Dry Van, New/ Unused Single and Tandem Axle Tag-a-Longs, Float, Step Deck, Gooseneck, Tag-a-Long Dump Trailers, Tag-a-Long Enclosed, Rigid Frame, Travel, Landscape, Steel Stake Body, Dry Van Bodies, (4)40' 5-Door Sea Containers, (2)3-Door 20' Sea Containers, 20' & 40 Sea Containers & Others.

**SEVERAL NEW/UNUSED AMISH BUILT SHEDS OF VARIOUS SIZE**



# AUCTION

**J.G. Cochran**  
**AUCTIONEERS & ASSOCIATES LTD.**  
*Professional Auctioneers & Appraisers Since 1972*

7704 MAPLEVILLE ROAD, P.O. BOX 222  
 BOONSBORO, MD 21713-0222  
 301-739-0538 • FAX 240.739.7663  
 CochranAuctions.com



Find us on: **facebook**

PRESORT  
 FIRST CLASS  
 U.S. POSTAGE  
 PAID  
 THE MAIL MAN

**ON-SITE AT**  
**7704 MAPLEVILLE ROAD**  
**BOONSBORO, MD 21713**

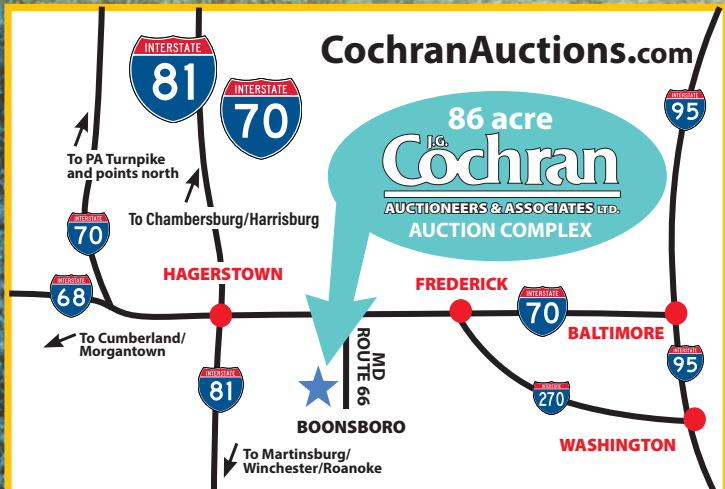


*Live & Online*  
**THURSDAY**  
**APRIL 9, 2026 • 8AM**  
**FRIDAY**  
**APRIL 10, 2026 • 8AM**

**2-DAY THURSDAY • APRIL 9, 2026 • 8AM**  
**FRIDAY • APRIL 10, 2026 • 8AM**



CHECK OUT OUR WEBSITE AT  
**COCHRANAUCTIONS.COM**  
 FOR MORE DETAILS AND PHOTOS!  
**10% BUYERS PREMIUM ON ALL ITEMS \$5,000 & LESS**  
**ITEMS \$5,001 & UP \$500 FLAT FEE PER ITEM**



**DIRECTIONS • ACCOMMODATIONS**

Located approximately 70 miles west of the Baltimore/Washington Metro Area, the auction will be held at the 86 acre COCHRAN AUCTION COMPLEX conveniently located just 4 miles south of Exit 35 off Interstate 70 on Maryland Route 66 at Boonsboro, MD.

**INSPECTION:** On all major equipment on Thursday, 9AM to 4PM

**GPS ADDRESS:** 7704 Mapleville Road, Boonsboro, MD

**SALE SITE PHONE:** (301) 739-0538 OR (800) 310-2844 (TOLL FREE MD)

**AIRPORT:** Hagerstown Regional Airport

**AREA ACCOMMODATIONS:**



**COMFORT SUITES • HAGERSTOWN**

Call and ask for your special low Cochran Auction Rate (301) 791-8100

Hampton Inn. .... (301) 739-6100



**TERMS:**

**COMPLETE PAYMENT SALE DAY:** Payments for all items must be made in full on sale day with cash, cashier's checks, travelers checks or money orders. Personal or company checks will be accepted with a valid bank letter of guaranteed payment. 5% Administration Fee for Debit/Credit. All sales subject to the applicable 6% sales tax of the State of Maryland. The Auction Company and Seller shall not be responsible for the correct description, authenticity, genuineness of, or defect in any or all lots. Grades should only be used as a guide and are not and will not be guaranteed. Everything sold at this auction will sell as-is and where-is to the highest bidder regardless of price.

**NOTE:** Several Auctioneers will be selling at one time. Please come prepared for this arrangement. Subject to additions and deductions. Not responsible for acts of our principles. Some items selling with reserves.

**10% BUYERS PREMIUM ON ALL ITEMS \$5,000 & LESS ITEMS \$5,001 & UP \$500 FLAT FEE PER ITEM**